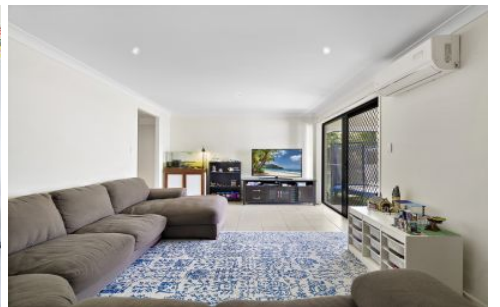
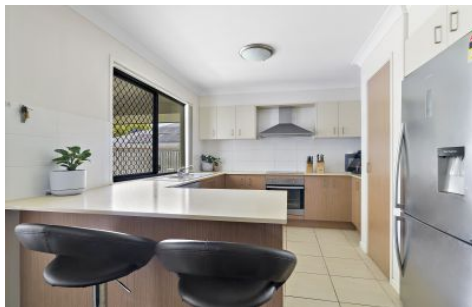




PROPERTYLANE  
REALTY



### 9 Perception Road NAMBOUR QLD

4 2 2

Built in 2008 this attractive large family home is located minutes away from parks, shopping centres, schools and sporting facilities. No detail was overlooked when planning this spacious home. It is perfect for a growing family and an equally good rental investment with excellent long term tenants who are willing to stay. Other features are:

Great design with quality fixtures and fittings

Wide and 9m long open plan family/living/dining room

Modern kitchen with wall oven, double sink and large pantry

Glass sliding door to covered alfresco area

Air conditioned living room and main bedroom

4 bedrooms, the main with air conditioner, en-suite and walk-in robe

Sparkling family bathroom with full size bath and separate shower alcove.

Carpet in lounge and bedrooms and quality ceramic floor

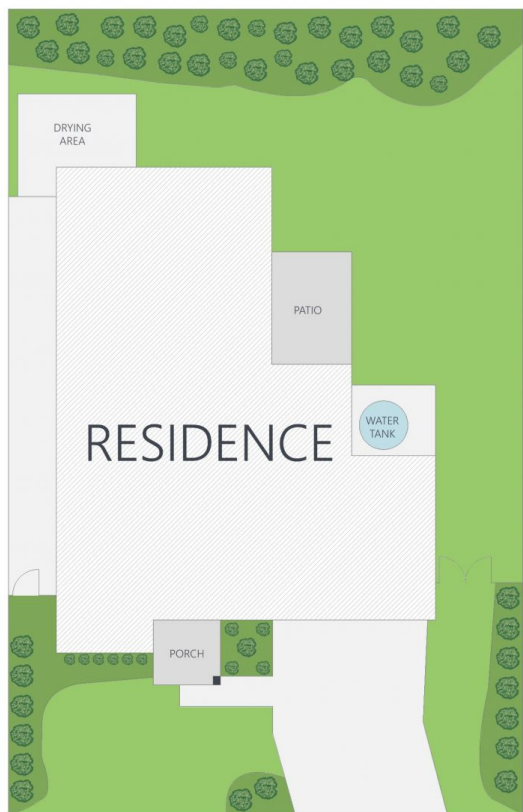
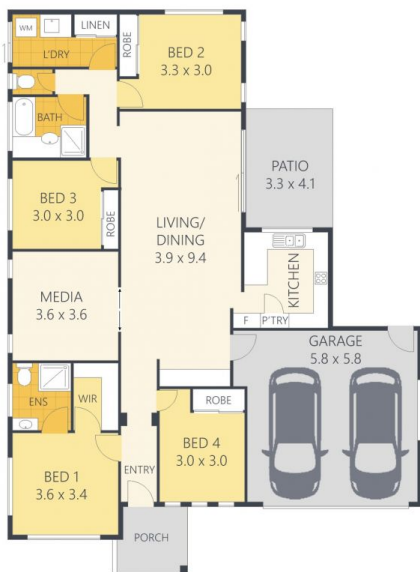
**Land Size** : 643 sqm

**View** : <https://www.propertylane.com.au/sale/qld/sunshine-coast/nambour/residential/house/7814228>



**Barry Mitchell**  
07 5442 1855

4  2  2 



ARTIST'S IMPRESSION ONLY: While every attempt has been made to ensure the accuracy of this floor plan areas and measurements of doors, windows, rooms and all other items are approximate and no responsibility is taken for any error, omission, or mis-statement. This plan is for illustrative purposes only and should only be used as such by any prospective purchaser. By RealEstateFloorPlans.com.au

Internal: 172m<sup>2</sup>  
External: 17m<sup>2</sup>  
Total: 189m<sup>2</sup>  
Land Size: 643m<sup>2</sup>

