



PROPERTYLANE
REALTY



199 Kiel Mountain Road KIELS MOUNTAIN QLD

4 2 4

This impressive split-level home was architecturally designed to maximise both the lovely leafy outlook, and its elevated position on Kiels Mountain. The long driveway leads down through your private bushland, opening into a sunny glade complete with low-maintenance gardens and a small orchard. The well-built residence offers a family-friendly layout with the ground level comprising of 3 spacious bedrooms, bathroom and laundry, and on the top floor the master retreat, stunning kitchen, living room and entertaining deck which offers views of Diddillibah through the treetops. The extra-height carport ensures you can park any vehicle with ease, and the separate shed offers additional parking or workshop space. With several excellent schools a very short drive away, this is the family tree-change youve been planning!

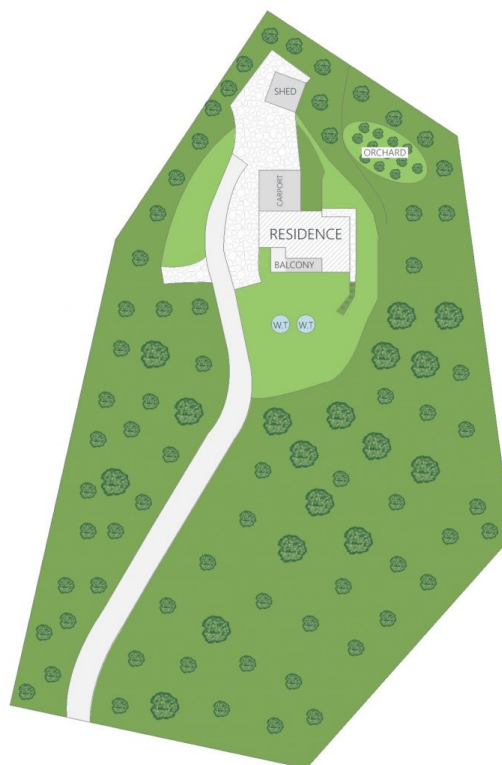
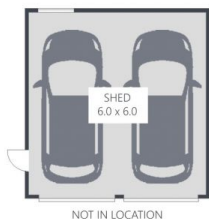
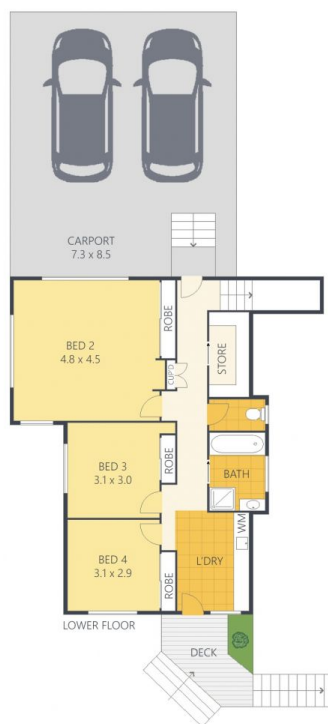
Type : House
Building Size : 26 sqm
Land Size : 8414 sqm
View : <https://www.propertylane.com.au/sale/ql/sunshine-coast/kiels-mountain/residential/house/7814243>



Athena Law
0408884104

[For full version visit the website](https://www.propertylane.com.au)

<https://www.propertylane.com.au>

4  2  4 


ARTIST'S IMPRESSION ONLY: While every attempt has been made to ensure the accuracy of this floor plan areas and measurements of doors, windows, rooms and all other items are approximate and no responsibility is taken for any error, omission, or mis-statement. This plan is for illustrative purposes only and should only be used as such by any prospective purchaser. By RealEstateFloorPlans.com.au

Internal: 160m²
 External: 85m²
 Total: 245m²
 Shed: 36m²
 Land Size: 8414m²

