



PROPERTYLANE
REALTY



EUDLO

8 3 9

UNDER CONTRACT - PLEASE CALL FOR ANY UPDATES

The peaceful and quaint township of Eudlo has truly delivered with this spectacular lifestyle property set right in the heart of it all! On just over 10 acres of prime, highly fertile arable or grazing land, this is the perfect opportunity for those looking for an amazing acreage lifestyle, horse enthusiasts, permaculture or anything else that requires good land for that matter!

The main home is near brand new with absolutely nothing to do but simply move in, take in the views and enjoy rural life! The home has been beautifully designed with large light filling windows, separation, comfort and most importantly the views in mind, with access and views from every room onto the large open deck spanning the full

Land Size : 41600 sqm

View : <https://www.propertylane.com.au/sale/qld/sunshine-coast/eudlo/residential/house/7814296>



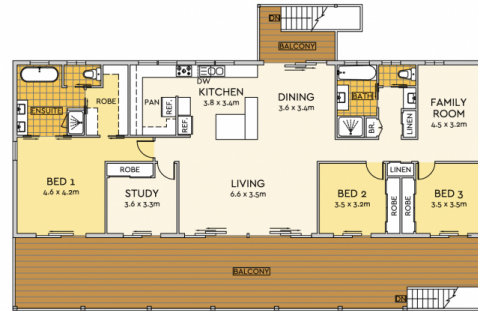
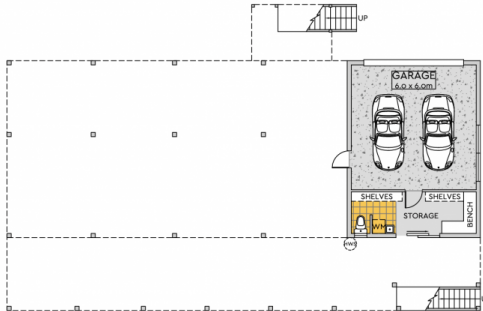
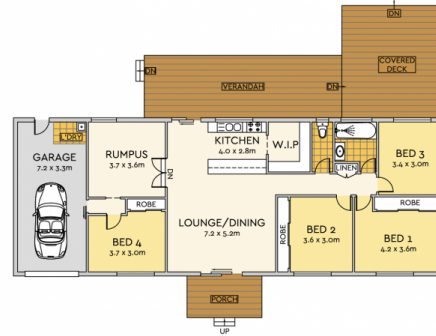
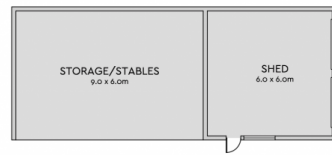
William Emms
07 5442 1855

<https://www.propertylane.com.au>

12 Corlis Avenue, Eudlo



7 3 3



MAIN RESIDENCE

TOTAL AREA : 621 m²

Scale in metres. We give no guarantee, warranty or representation as to the accuracy and completeness of the floor plan. We recommend that you instruct your own surveyor to carry out an independent investigation of the property prior to relying on the accuracy and completeness of this plan. Floor Plan presented by The Floor Plan Specialist. www.thefloorplanspecialist.com.au

12 Corlis Avenue, Eudlo



LAND TOTAL : 41550 m²



Scale in metres. We give no guarantee, warranty or representation as to the accuracy and completeness of the floor plan. We recommend that you instruct your own surveyor to carry out an independent investigation of the property prior to relying on the accuracy and completeness of this plan. Floor Plan presented by The Floor Plan Specialist. www.thefloorplanspecialist.com.au